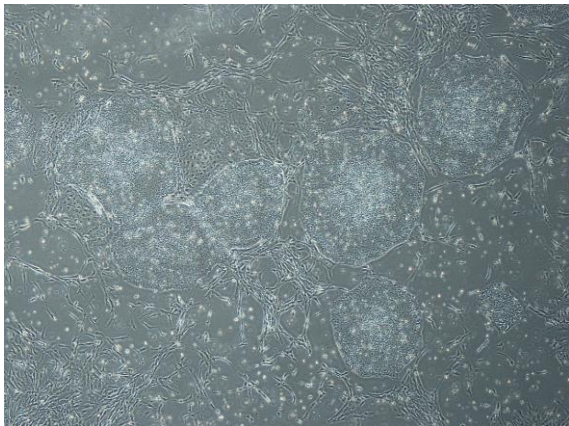
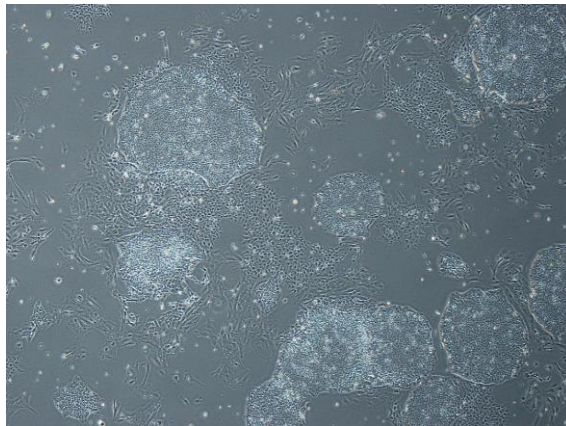


【 CiRA-j-1560 】 Morphology of iPSC colonies

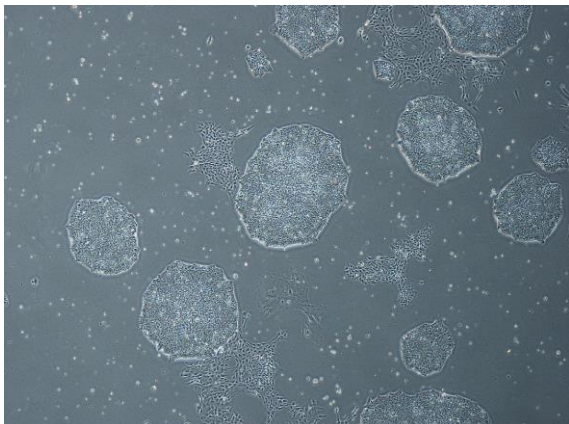
CiRA-j-1560-A: passage-4



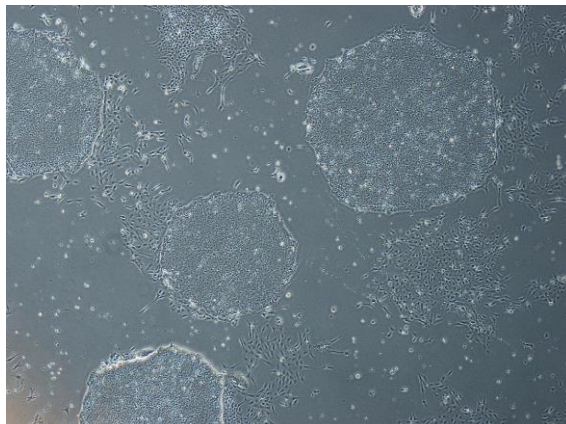
CiRA-j-1560-B: passage-4



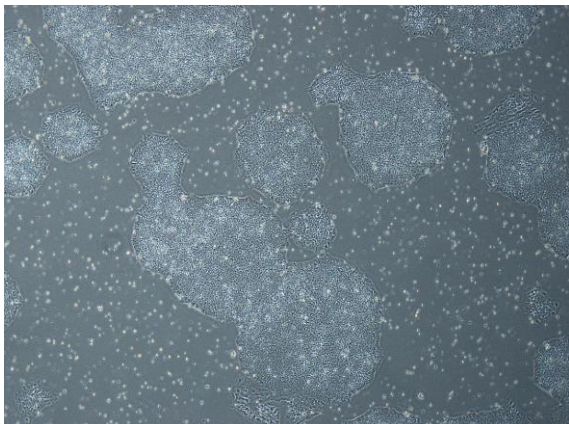
CiRA-j-1560-C: passage-4



CiRA-j-1560-D: passage-4



CiRA-j-1560-E: passage-4



CiRA-j-1560-D: passage-4

No Photo

(All images were captured at 4x magnification)